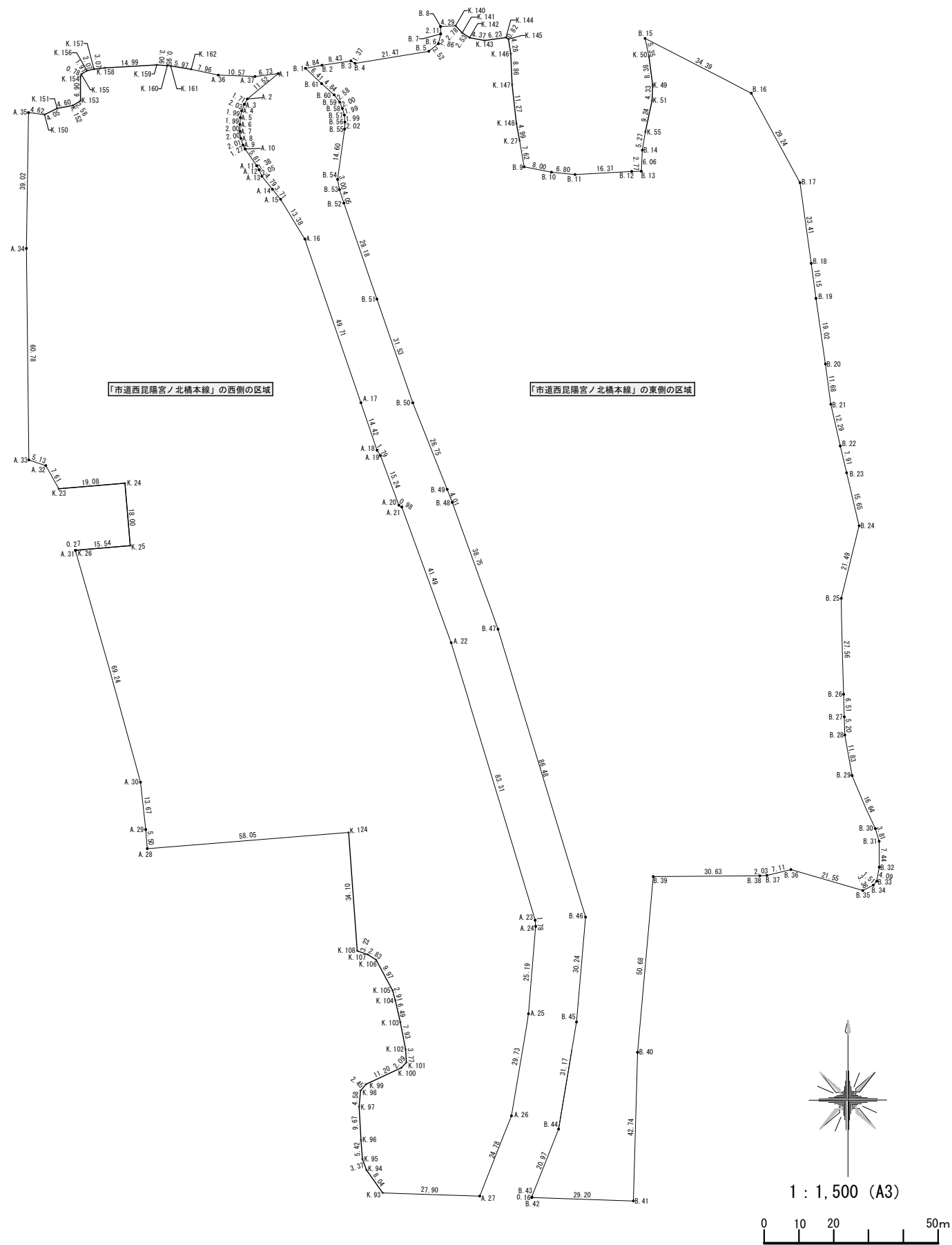


別添資料3 事業用地求積図



「市道西昆陽宮ノ北橋本線」の西側の区域

測点	X	Y	辺長
A. 1	-134996.265	95533.326	11.52
A. 2	-135003.573	95524.415	1.71
A. 3	-135005.075	95523.594	2.03
A. 4	-135006.950	95522.800	1.99
A. 5	-135008.909	95522.416	1.99
A. 6	-135010.898	95522.286	2.00
A. 7	-135012.898	95522.308	2.00
A. 8	-135014.890	95522.564	2.01
A. 9	-135016.814	95523.179	1.27
A. 10	-135017.933	95523.796	5.81
A. 11	-135022.716	95527.103	1.38
A. 12	-135023.894	95527.829	2.05
A. 13	-135025.791	95528.612	4.79
A. 14	-135029.510	95531.640	3.71
A. 15	-135032.389	95533.985	13.38
A. 16	-135043.817	95540.948	49.71
A. 17	-135090.841	95557.074	14.42
A. 18	-135104.495	95561.722	1.79
A. 19	-135106.008	95562.685	15.24
A. 20	-135120.293	95567.995	0.98
A. 21	-135120.818	95568.833	41.49
A. 22	-135159.810	95583.023	83.31
A. 23	-135239.547	95607.163	1.78
A. 24	-135241.328	95607.313	25.19
A. 25	-135266.439	95605.246	29.73
A. 26	-135295.769	95600.360	24.78
A. 27	-135318.819	95591.237	27.90
K. 93	-135317.909	95563.350	8.04
K. 94	-135311.349	95558.701	3.37
K. 95	-135308.188	95557.512	5.42
K. 96	-135302.783	95557.109	9.67
K. 97	-135293.121	95556.545	4.58
K. 98	-135288.556	95556.972	2.45
K. 99	-135286.675	95558.553	11.20
K. 100	-135281.927	95568.706	2.09
K. 101	-135280.422	95570.165	3.77
K. 102	-135276.653	95569.926	7.93
K. 103	-135268.860	95568.409	6.49
K. 104	-135262.531	95566.957	2.91
K. 105	-135259.722	95566.183	9.97
K. 106	-135250.934	95561.456	2.83
K. 107	-135249.408	95559.061	3.22
K. 108	-135248.359	95556.011	34.10
K. 124	-135214.344	95553.539	58.05
A. 28	-135218.989	95495.669	5.50
A. 29	-135213.497	95495.225	13.67
A. 30	-135199.903	95493.719	69.24
A. 31	-135133.236	95474.991	0.27
K. 26	-135133.214	95475.267	15.54
K. 25	-135131.911	95490.756	18.00
K. 24	-135113.971	95489.232	19.08
K. 23	-135115.552	95470.212	7.61
A. 32	-135108.906	95466.503	5.13
A. 33	-135107.292	95461.630	60.78
A. 34	-135046.507	95460.920	39.02
A. 35	-135007.484	95461.531	4.62
K. 150	-135008.059	95466.118	4.05
K. 151	-135006.269	95469.753	4.60
K. 152	-135005.436	95474.287	2.58
K. 153	-135004.090	95476.491	6.90
K. 154	-134997.188	95476.447	0.78
K. 155	-134996.444	95476.694	1.91
K. 156	-134995.447	95478.332	2.07
K. 157	-134994.978	95480.358	3.07
K. 158	-134994.638	95483.419	14.99
K. 159	-134993.783	95488.388	3.06
K. 160	-134993.981	95501.442	0.95
K. 161	-134994.060	95502.393	5.97
K. 162	-134995.067	95508.286	7.96
A. 36	-134996.714	95516.076	10.57
A. 37	-134997.107	95526.641	6.73

積積 47589.360
面積 23794.680
「市道西昆陽宮ノ北橋本線」の西側の面積：23,794.680㎡

「市道西昆陽宮ノ北橋本線」の東側の区域

測点	X	Y	辺長
B. 1	-134994.747	95541.120	4.84
B. 2	-134993.872	95545.881	8.43
B. 3	-134992.641	95554.222	1.37
B. 4	-134993.325	95555.410	21.47
B. 5	-134989.873	95576.602	3.52
B. 6	-134987.666	95579.356	2.86
B. 7	-134984.881	95580.012	2.11
B. 8	-134982.769	95579.999	4.29
K. 140	-134982.559	95584.286	2.78
K. 141	-134984.583	95586.199	2.53
K. 142	-134985.971	95588.316	4.37
K. 143	-134986.772	95592.618	6.23
K. 144	-134985.911	95598.792	0.82
K. 145	-134986.339	95599.493	4.28
K. 146	-134990.573	95600.165	8.86
K. 147	-134999.425	95600.550	11.27
K. 148	-135010.635	95601.785	4.99
K. 27	-135015.545	95602.680	7.62
B. 9	-135023.054	95604.009	8.00
B. 10	-135024.620	95611.855	6.80
B. 11	-135025.269	95618.624	16.31
B. 12	-135024.393	95634.912	2.77
B. 13	-135024.328	95637.684	6.06
B. 14	-135018.265	95637.968	5.27
K. 55	-135013.059	95638.830	9.24
K. 51	-135004.026	95640.779	4.33
K. 49	-134999.699	95640.964	8.38
K. 50	-134991.386	95639.884	5.35
B. 15	-134986.149	95638.754	34.39
B. 16	-135001.927	95669.320	29.24
B. 17	-135027.613	95683.297	23.41
B. 18	-135050.804	95686.525	10.15
B. 19	-135060.864	95687.884	19.02
B. 20	-135079.690	95690.602	11.68
B. 21	-135091.272	95692.149	12.29
B. 22	-135103.260	95694.878	7.91
B. 23	-135110.966	95696.697	15.65
B. 24	-135126.202	95700.301	21.49
B. 25	-135147.072	95695.154	27.56
B. 26	-135174.625	95695.835	6.51
B. 27	-135181.137	95696.035	5.20
B. 28	-135186.342	95696.188	11.83
B. 29	-135197.990	95698.284	16.64
B. 30	-135213.217	95704.999	3.81
B. 31	-135216.876	95706.080	7.44
B. 32	-135224.321	95706.106	4.09
B. 33	-135228.358	95705.397	1.51
B. 34	-135229.484	95704.387	3.36
B. 35	-135231.022	95701.397	21.55
B. 36	-135225.005	95680.699	7.11
B. 37	-135226.675	95673.781	2.03
B. 38	-135226.793	95671.745	30.63
B. 39	-135227.007	95641.106	50.68
B. 40	-135277.490	95636.613	42.74
B. 41	-135320.216	95635.312	29.20
B. 42	-135319.247	95606.227	0.16
B. 43	-135319.080	95606.236	20.97
B. 44	-135299.553	95613.900	31.17
B. 45	-135268.803	95619.052	30.24
B. 46	-135238.666	95621.651	86.48
B. 47	-135155.920	95596.484	38.75
B. 48	-135119.473	95583.324	4.01
B. 49	-135115.728	95581.869	26.75
B. 50	-135090.870	95571.985	31.53
B. 51	-135061.066	95561.675	29.18
B. 52	-135033.468	95552.182	4.05
B. 53	-135029.617	95550.924	3.00
B. 54	-135026.667	95550.362	14.60
B. 55	-135012.203	95552.396	1.99
B. 56	-135010.209	95552.482	2.02
B. 57	-135008.190	95552.321	1.99
B. 58	-135006.278	95551.748	2.00
B. 59	-135004.439	95550.958	2.58
B. 60	-135002.395	95549.383	4.84
B. 61	-134999.164	95545.778	6.41

積積 54153.147
面積 27076.574
「市道西昆陽宮ノ北橋本線」の東側の面積：27,076.574㎡

事業用地全体の面積
23,794.680㎡ + 27076.574㎡ = 50,871.254㎡