



# Amagasaki City

Special  
Version

# Disaster Prevention Handbook



## Evacuation Planning

1. General evacuation flowcharts
2. Evacuation information
3. Flood forecasting and tsunami warnings/advisories
4. How and where to evacuate
5. Precautions for evacuation
6. How to obtain disaster-related information
7. Your evacuation site and evacuation information

## Disaster Preparedness

1. Preparedness
2. How to guide people who require assistance
3. Disaster evacuation card (My personal information)
4. Emergency contact information

## Introduction

The nation has been hit by large scale earthquakes such as the Great East Japan Earthquake, the 2016 Kumamoto Earthquake, and the 2018 Hokkaido Eastern Iburi Earthquake in the past years alone. They have caused the severe damages to the areas as a result of tremors and tsunami. A massive earthquake, Nankai Trough Earthquake is predicted to occur within the next 30 years. Meanwhile, the series of disasters including river flooding have occurred due to typhoons and heavy rain. The 2018 Japan floods occurred in July killed more than 200 people. The damages caused by natural disasters have become more serious. Therefore, we should be prepared for large scale disasters.

The city of Amagasaki has issued this handbook to provide evacuation information such as how to evacuate, when to evacuate, and how to obtain the information. We hope this handbook will help you understand the evacuation procedures and evacuate quickly and appropriately in times of an emergency.

Best regards,

Amagasaki City Mayor **Inamura Kazumi**

## Key entities of evacuation (Roles of self-help, mutual-help and public-help)

"Self-help," "mutual-help," and "public-help" are three key entities to achieve disaster prevention measures. Collaborative work among entities will eventually lead to disaster mitigation.

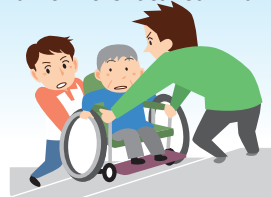
### Self-help

- Protect yourself and your family
- Be prepared in advance



### Mutual-help

- Support each other within the local communities
- Perform disaster prevention drills in the local communities.



### Public-help

- Identify designated evacuation sites
- Create plans on disaster prevention



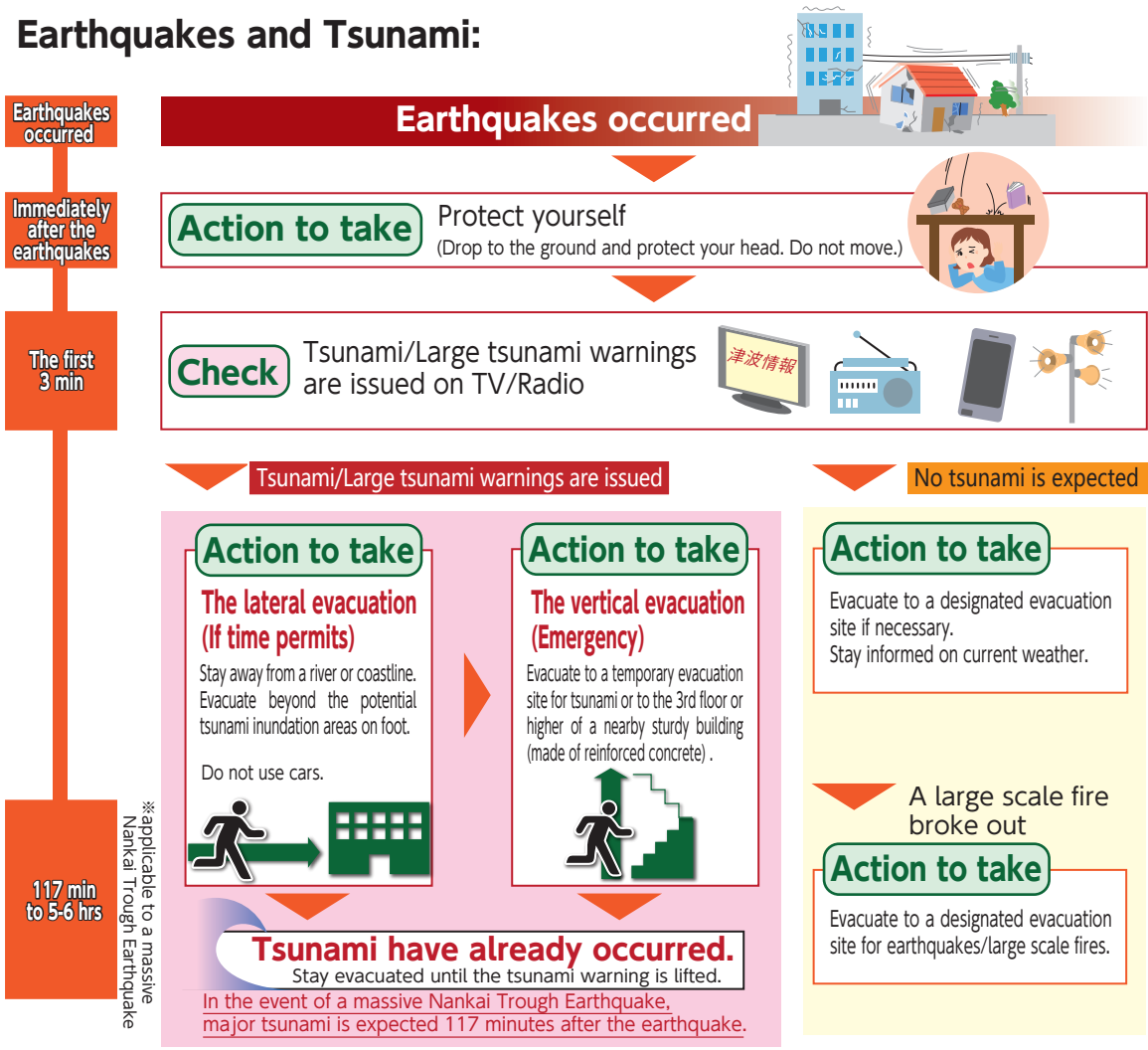
Public authorities may not be able to provide relief quickly to aid all disaster victims immediately after a disaster.

Meanwhile, self-help and mutual-help will play a primary role in responding to them in the event of a disaster.

MEMO

# 1. General evacuation flowcharts

## Earthquakes and Tsunami:



MEMO

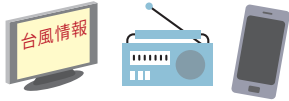
# 1. General evacuation flowcharts

## Typhoons and Heavy Rain

 **A typhoon is approaching. Disaster may occur.**

### Check

Weather information on TV, radio, etc.



### Decision-making

Based on the information you gathered, make a decision when to evacuate. Get ready for evacuation to a safe place.

### Action to take Evacuate to a safe place

Stay away from an area at risk before a disaster occurs and evacuate to a safe place including a designated evacuation site, etc.



### Decision-making

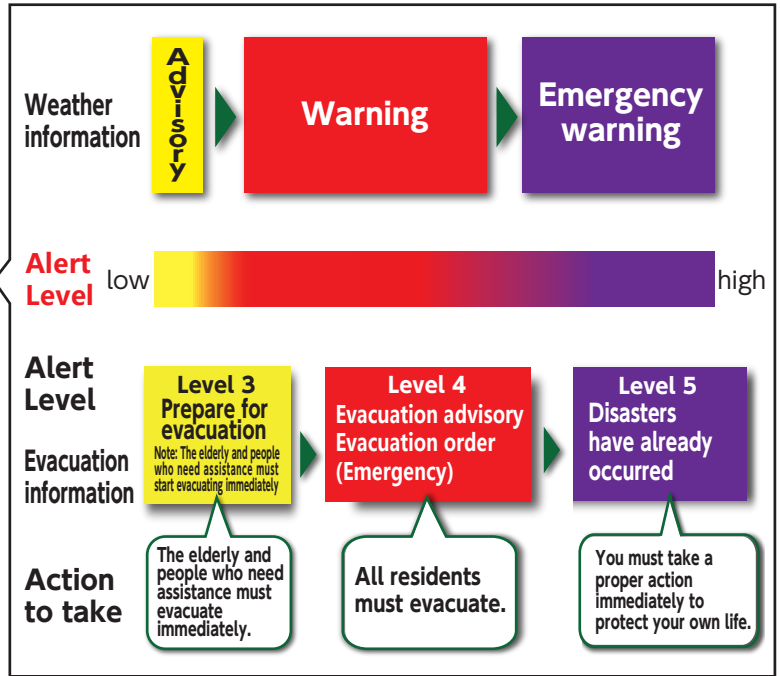
If you failed to evacuate, follow the next step.

### Action to take Evacuate to a safe location/ Shelter in place

Evacuate to a temporary evacuation site for tsunami or a nearby sturdy building. If it is too late, move to a safer location in the building you are currently in.



## Alert categories and action to take



MEMO

## 2. Evacuation information

The Japan Meteorological Agency(JMA) and local government will issue alert levels preparing for potential disasters. The evacuation information is provided by local government to residents through outdoor loudspeakers, municipal information cars, Amagasaki Bosai Net ("Bosai Net" is online disaster prevention information), and emails on emergency early warnings. Planning ahead is vital to ensuring that you can evacuate quickly and safely, no matter what the circumstances, even before the announcement of evacuation information is made.

Alert Level 1	Alert Level 2	Alert Level 3	Alert Level 4	Alert Level 5
Early warning information (a warning level of the alert may be issued within the next few days)	Weather advisory	<b>Prepare for evacuation</b> Note: The elderly and people who need assistance must start evacuating.	Evacuation Advisory Evacuation Order(Emergency)	Alert : disasters have already occurred
Issued by the JMA		Issued by local government		

Alert categories for disasters High

### Warnings and Emergency warnings

The JMA issues "warnings" to prepare against hazardous disasters triggered by heavy rain, earthquakes, tsunami, or storm surges. Meanwhile, "emergency warnings" or "tokubetsu keihou" are issued on extremely heavy rain or massive tsunami that will far exceed warning categories to alert the significant likelihood of catastrophes.

#### List of natural disasters which required emergency warnings

2016	The 2016 Kumamoto Earthquake
2016	Typhoon Chaba 2016 (The 18th Typhoon hit Okinawa)
2017	Heavy Rain in Kyushu Region
2018	2018 Japan floods

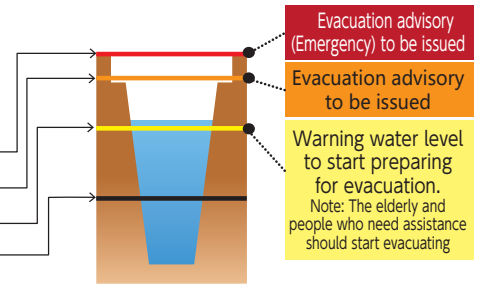
Emergency warnings are issued for areas expecting an exceptional risk of a magnitude that local residents have never experienced before. All residents must evacuate immediately.

MEMO

### 3. Flood forecasting and tsunami warnings/advisories

The JMA will provide flood forecasting collaborating with central and local government agencies. Flood forecasting includes the information on water levels of the river segments that have been designated as potential flood-disaster rivers. The data provided by flood forecasting will be utilized for floods prevention activities in times of the rise of water level or river flooding. Also residents can refer to the information to make a pre-plan for evacuation. Water levels and flood forecasting of Mukogawa River and Inagawa River can be obtained on the website of the MLIT, or "kawa-no-bosai jyoho."

Floods forecasting	River water level	Mukogawa River		Inagawa River
		Kohbubashi Observation Stn	Kosone Observation Stn	Ohbe Observation Stn
Flood has been occurred	—	—	—	—
—	Over the hazardous water level	6.1 m	7.5 m	6.6 m
Flood risk	Over the critical water level	5.2 m	6.3 m	4.0 m
Flood warning	Over the evacuation warning water level	4.1 m	4.7 m	3.4 m
Flood advisory	Over the advisory water level	3.2 m	4.0 m	2.5 m



※ 川防 English  Search <https://www.river.go.jp/english>

### Tsunami warnings(keihou)/advisories(chuihou)

In the event of a massive Nankai Trough Earthquake, the estimated arrival time of the first wave of tsunami in Amagasaki will be 117 minutes\* after the earthquake. The highest tsunami wave level is estimated 4m. For your safety, stay evacuated until the tsunami advisory is lifted by the city officials.

※ Hyogo Prefecture. (Dec 2013) . Nankaitorafu kyodaijishin no tsunamishinsui no sotei ni tsuite

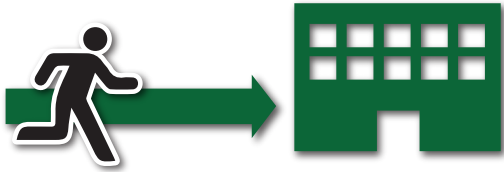
	Expected tsunami wave heights		Action to take
	Height of wave	Level of tsunami (applicable to a massive earthquake)	
Large tsunami warning (emergency warning)	Over 10m (10m<height)	Massive	<p>If you remain near a coastline or river, evacuate to a elevated land immediately.</p> <p>Tsunami is not a single wave but a series of waves. Stay at a safe location until the tsunami warning is lifted.</p>
	10m(5m<height≤10m)		
	5m(3m<height≤5m)		
Tsunami warning	3m(1m<height≤3m)	High	<p>Never give up and look for the highest possible point.</p>
Tsunami advisory	1m(0.2m≤height≤1m)	—	<p>If you are in the water, stay out of the water immediately and keep away from the coastline.</p> <p>Do not swim or do not return to a coastline until the tsunami advisory is lifted.</p>

MEMO

## 4. How and where to evacuate |||||

There are 3 different evacuation options during an emergency. The lateral evacuation: evacuate as far as possible from a river or coastline. The vertical evacuation: evacuate to an evacuation site or a nearby safe location. Shelter in place : evacuate to the 2nd floor or higher if you remain at home, office, etc. If the lateral evacuation is more hazardous, determine either vertical evacuation or shelter in place.

### The lateral evacuation











### The vertical evacuation Shelter in place



## Evacuation sites

According to the type of a disaster and weather conditions, there are following different facilities are available in times of evacuation. Be aware of each facility's primary function and confirm the location of nearest evacuation site from home in advance.

Temporary evacuation sites for natural disasters including tsunami 	Designated evacuation sites 
 These facilities provide temporary shelter in times of tsunami/flooding, or when those disasters are likely to occur. Temporary evacuation sites have become available once evacuation information is announced.	 These facilities provide shelter until the risk of disasters is removed. Designated evacuation sites also provide lodging for people who have lost their homes in a disaster.
Evacuation sites for earthquakes and large scale fires 	Welfare facilities for evacuation 
 These facilities provide shelter in the event of earthquakes or large scale fires triggered by tremors.	 These facilities provide shelter for people who require special assistance.

### MEMO

## 5. Precautions in times of evacuation

### Evacuate on foot Earthquake/Tsunami Heavy rain/Flooding/Storm surges



Do not use cars. There is a risk that you may be trapped in a car due to congestion or flooding.

### Help each other in your community Earthquake/Tsunami Heavy rain/Flooding/Storm surges



Help the elderly and the physically impaired.

### Use wide and safe routes! Earthquake/Tsunami Heavy rain/Flooding/Storm surges



Avoid narrow streets, outerwalls, riverbanks, underpasses, levees, etc. Walk with caution.

### Stay away from a river/coastline! Earthquake/Tsunami Heavy rain/Flooding/Storm surges



Levees may collapse resulting in river flooding or tsunami may occur.

### If you remain in underground area, evacuate to the street level immediately! Earthquake/Tsunami Heavy rain/Flooding/Storm surges



There is a risk that you may be trapped underground due to flooding.

### If you failed to evacuate, evacuate to a higher level! Earthquake/Tsunami Heavy rain/Flooding/Storm surges



If you remain at home, evacuate to the top floor (2nd floor or higher). If time permits, evacuate to a nearby higher building.

### Do not return home until the warning is lifted. Earthquake/Tsunami



Tsunami may come as a series of surges. Stay evacuated until the warning is lifted by the city officials.

### Evacuate early Heavy rain/Flooding/Storm surges



Keep yourself updated with weather conditions and evacuation information. Get ready to evacuate early to a safe location.

MEMO



## 6. How to obtain disaster-related information

### Bosai Net

#### ▼ User registration is required to receive information.

Evacuation information including evacuation advisories can be obtained from the city of Amagasaki through smartphones or cell-phones after you complete user registration.

For registration, send an email to : [amagasaki@bosai.net](mailto:amagasaki@bosai.net)  
or use QR code to receive the registration inquiry mail.



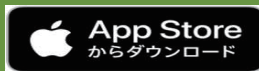
#### ▼ Smartphone Apps

Evacuation information and evacuation site maps are available through apps. These apps also provide the text reading function that allow you to hear the information you have received.

Android



iOS



**Amagasaki city website** <http://www.city.amagasaki.hyogo.jp/>

**Outdoor loudspeakers & Municipal information cars** Disaster information will be announced through outdoor loudspeakers installed in riversides and coastlines. Emergency information is also provided by municipal information cars.

**TV/Radio**

**TV**

Press "d" in your remote controller while you choose the channel either NHK or Sun TV to obtain information on weather conditions or evacuation sites in Amagasaki.

**Radio**

The Community FM broadcasting station, FM Amagasaki at 82.0 MHz provides useful information in the event of a disaster.

**Social media**

**Facebook**

<https://www.facebook.com/amagasaki.bousai>

**LINE@**

Account Name: Amagasaki City/LINE ID:@amagasaki

**Twitter**

[https://twitter.com/ama\\_hajimail](https://twitter.com/ama_hajimail)

※QR Code is a registered trademark of DENSO WAVE Incorporated.

MEMO

## 7. Your evacuation site and evacuation information

To ensure a quick and safe evacuation, complete the following evacuation form in advance.

Disasters	Tsunami	River flooding Name of River : ( )River
Evacuation Sites <small>Refer to p.6 and hazard maps</small>	e.g. Elementary School A	e.g. Elementary School A
	Evacuation Information <small>Refer to p.4 &amp; p.5</small>	e.g. Large tsunami warning, tsunami warning
How to obtain disaster-related information <small>Refer to p.8</small>	e.g. TV, Outdoor loudspeakers, Emergency alert emails	e.g. Amagasaki City Bosai Net, TV, Emergency alert emails

### Get involved in your community and inform your evacuation.

Know your neighbors and inform them of your evacuation notice, where you are going. Fill in your contact information below and if you accompany someone, list their names as well. Establish a support network who will help you during an evacuation especially if you require assistance.

I will be out-of-town with the following person(s). <small>Refer to p.11</small>	Contact information

MEMO



Disasters occur suddenly. The key to keep your family safe is to be prepared in advance. Read this handbook with your family and discuss what to do in the event of a natural disaster. Take a walking pre-survey of the designated sites of evacuation with this handbook and find out potential problems to determine an evacuation route in advance.

### Discuss and plan with your family.

- Check furniture likely to fall in the event of earthquakes.
- Confirm safe routes to evacuation sites from home
- Assign responsibilities to each family member during an emergency evacuation.
- How each family member will contact one another if you are not together.
- Establish a place to meet if communication tools are shut down.
- Cope with a situation children remained home alone.



## Emergency supplies & kit (Prepare for three-day survival on your own)

### Water/Food

- Drinking water
- Water tank/Water pouch
- Processed quick-cooking rice
- Canned food/Ready-to-eat food
- Portable stove including gas cylinders
- Induction cookware
- Paper plates/Paper cups/Disposable chopsticks

### Daily items

- Portable radio or hand-crank radio
- Rechargeable batteries for cell-phones, etc.
- Flashlight
- LED lantern
- Batteries
- Matches/Lighter
- All-purpose knife (Army knife)
- Hard hat or hood/Helmet

- Raincoat
- Work gloves
- Trash bags
- Eye glasses/Contacts
- Eye mask/Ear plugs

### Medical supplies

- Medications
- First aid kit
- Medical record handbook(Okusuri Techo)

### Personal Hygiene Items

- Portable toilet
- Tissues & Toilet paper
- Toothbrush & Toothpaste
- Dry shampoo
- Moist towelettes
- Feminine hygiene supplies
- Mask

### The elderly supplies

- Hearing aid
- Denture
- Nursing care items

### Baby supplies

- Baby food/Powdered milk
- Nursing bottle
- Diapers/Baby wipes

### Clothing/Outfits for cold weather

- Blanket/Space blanket(Thermal blanket)
- Underclothes/Change of clothes
- Disposable hand warmers

### Valuables

- Cash including small coins
- Health insurance card
- ID

Items marked with

should be prepared for a blackout. In case public utilities are not available, stay informed on information provided by the city officials regarding charging spots, emergency water supplies, etc.

## MEMO

## 2. How to guide people who require assistance

People who require assistance such as the elderly, people with disabilities, and people who have language barriers, etc., are more likely to encounter hardships responding to a disaster. We encourage your community build a support network to confirm their safety after a disaster, or provide disaster information and assistance to an evacuation site if they needed.

### ■The elderly and the sick



- Carry the person on your back to a safe location.
- Use a cart (if available) to carry the person.
- Do not work alone. Find someone who could help you.

### ■The visually impaired



- Ask first and give the person an instruction.
- When you guide the person, go to the arm which does not have the cane. The person should keep his or her hand on your arm. Have the person half a step behind you and walk slowly.

### ■The mobility impaired



- Having two or more people is essential when you need to handle a wheelchair on stairs. The safest method is facing up the stairs for both descending and ascending stairs.
- If you are the only caregiver to carry the person, make sure you secure the person on your back using ropes.

### ■The hearing impaired



- Speak clearly, slowly, and distinctly to the person.
- Use sign language, handwriting, or gestures accordingly.

MEMO

### 3. Disaster evacuation card (My personal information)



Information provided in this card will help you inform your health conditions in the event of an emergency. Complete this card and keep it with you.

<b>Name</b>			
<b>Sex</b>		<b>Blood type</b>	
<b>Date of birth</b>			
<b>Address</b>			
<b>Phone number</b>			

\*You may photocopy of this page.

### Medical/Nursing care information

Hospital/Clinic		<b>Name of Hospital/Clinic</b>	
<b>Name of Doctor/ Clinical department</b>		<b>Phone number</b>	
Nursing facility (if applicable)		<b>Name of nursing facility</b>	
<b>Contact person at nursing facility (if applicable)</b>		<b>Phone number</b>	

<b>List of current medications</b>
(e.g. hypotensive drug(ARB), insulin injection)

<b>Specific medical conditions, adaptive equipment, etc.</b>
(e.g. I need artificial dialysis 3 times/week. I am in a wheelchair)

### Contact person(s) who provide assistance

<b>Name</b>	<b>Relationship to the person (e.g. son, daughter, friend, etc.)</b>	<b>Phone number</b>

MEMO

## 4. Emergency contact information

<b>Weekday</b> 8:30am-7:00pm	<b>Amagasaki city call center</b> Contact us for general inquires, otherwise we will transfer the call accordingly or provide the contact information.						
<b>Saturday/Sunday/Holiday</b> 9:00am-5:00pm	<table border="1" style="width: 100%;"> <tr> <td style="background-color: #ffff00; text-align: center;"><b>Call</b></td> <td style="text-align: center;">0 6 - 6 3 7 5 - 5 6 3 9</td> </tr> <tr> <td style="background-color: #ffff00; text-align: center;"><b>Fax</b></td> <td style="text-align: center;">0 6 - 6 3 7 5 - 5 6 2 5</td> </tr> </table>	<b>Call</b>	0 6 - 6 3 7 5 - 5 6 3 9	<b>Fax</b>	0 6 - 6 3 7 5 - 5 6 2 5		
<b>Call</b>	0 6 - 6 3 7 5 - 5 6 3 9						
<b>Fax</b>	0 6 - 6 3 7 5 - 5 6 2 5						
After business hours	<table border="1" style="width: 100%;"> <tr> <td colspan="2" style="background-color: #cccccc; text-align: center;"><b>Amagasaki city hall office Night-time only.</b></td> </tr> <tr> <td colspan="2" style="text-align: center;">We are not able to transfer the call. We will send your inquiry to the appropriate section.</td> </tr> <tr> <td style="background-color: #ffff00; text-align: center;"><b>Call</b></td> <td style="text-align: center;">0 6 - 6 4 8 9 - 6 9 0 0</td> </tr> </table>	<b>Amagasaki city hall office Night-time only.</b>		We are not able to transfer the call. We will send your inquiry to the appropriate section.		<b>Call</b>	0 6 - 6 4 8 9 - 6 9 0 0
<b>Amagasaki city hall office Night-time only.</b>							
We are not able to transfer the call. We will send your inquiry to the appropriate section.							
<b>Call</b>	0 6 - 6 4 8 9 - 6 9 0 0						

Contact the appropriate section/division according to a damage/incident specified below  
 Note: In the event of a natural disaster, you may get a busy signal for a long time.

Damages/Incidents	Contact	Call
General inquiry for disaster prevention measures	Disaster Countermeasures Division	0 6 - 6 4 8 9 - 6 1 6 5
Injuries	Fire Bureau	1 1 9
Street flooding & Clogged street drains	Road Maintenance Division	0 6 - 6 4 2 2 - 5 0 3 4
River floods	River Management Division	0 6 - 6 4 8 9 - 6 4 9 8
Manhole faults such as missing manhole covers, open manholes, or manhole flooding. Backflow of sewage into a house, etc.	Sewerage System Department Construction Division	0 6 - 6 4 8 9 - 6 5 6 2
Fallen trees on street	Road Maintenance Division	0 6 - 6 4 2 2 - 5 0 3 4
Fallen trees in park	Park Maintenance Division	0 6 - 6 4 8 9 - 6 5 3 1

### Public Utilities

Have your customer number (or go-shiyo bango) ready before you call. The number is specified in your public utility bill.  
 Fill in your customer number (or go-shiyo bango) below.

Osaka Gas Co., Ltd.	0 1 2 0 - 7 - 9 4 8 1 7	Your customer number	
Osaka Gas Co., Ltd. for gas leaks	0 1 2 0 - 7 - 1 9 4 2 4		
The Kansai Electric Power Co., Inc.	0 8 0 0 - 7 7 7 - 3 0 8 1		
Amagasaki City Waterworks and Sewerage 8:45am-5:30pm except Dec 29-Jan 3	0 6 - 6 3 7 5 - 0 0 0 2		
Amagasaki City Waterworks and Sewerage 5:30pm-8:45am 24hr for Dec 29-Jan 3	0 6 - 6 4 8 9 - 7 4 0 0		

## MEMO

Published by: Amagasaki City Disaster Risk Management Office  
 Regional Disaster Prevention Measures Division  
 1-23-1 Higashinamatsu-cho Amagasaki Hyogo 660-8501

Call: 06-6489-6165

Fax: 06-6489-6166

Published in Oct, 2019.